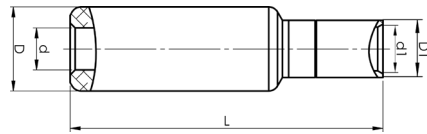




# ELPRESS®

## Product Datasheet

Through connectors of aluminium-copper  
300 - 400 mm<sup>2</sup>



Stranded Al mm <sup>2</sup>	mm <sup>2</sup> (Cu)	AWG Al (Stranded)	AWG Cu	Name	d (mm)	d1	D	D1	L	s	s1	Pcs/ pack	Tool
300	185	600	350	AKS300B-185	22,3	21	37	27	126,5	68	40	6	V1300, V250
300	240	600	500	AKS300B-240A	22,3	22,5	37	29	126,5	68	40	6	V1300, V250
400	240	750	500	AKS400B-240A	25	22,5	37	29	126,5	68	40	6	V1300, V250
400	300	750	600	AKS400B-300A	25	24,5	37	31,5	127	68	40	6	V1300, V250

If class 5 Cu conductors are used, use the corresponding DUAL tool for (D)V1300 or (D)V250., s = strip length (Al), s1 = strip length (Cu)



# ELPRESS®