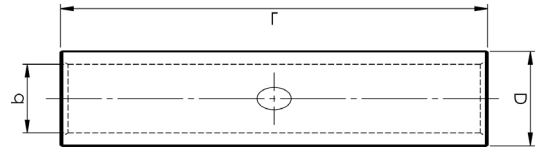




# ELPRESS®

## Product Datasheet

### KSX through connectors for Excel and Fx-cel cable 10 - 16 mm<sup>2</sup>



mm <sup>2</sup> (Cu)	AWG Cu	Name	d	D	L	s	Die	Marking	Pcs/pack	Tool
10	8	KSX10	4,5	7	65	30	7	10x7	3	V600, V1300
16	6	KSX16	5,5	8,5	65	30	8,5	16x8,5	3	V600, V1300

s = strip length

The Elpress logo is included on the marking. Two plus two crimps are carried out with the V600, V611, PVX611 or T2600 system, crimp die TB7-20.



# ELPRESS®