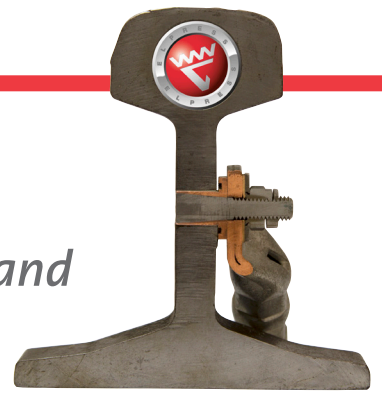


System Railbond





System Railbond

– Railbond ensures good return conductivity and reliable earthing for an extended period

TESTED AND CERTIFIED SYSTEM

Railbond & Steel terminal – the combination has been tested in the in-house laboratory at Elpress.

Extensive electrical, mechanical and environmental tests confirm reliability and durability over time.

EASY APPLICATION

Quick and easy operation for repeatable and automatable processes.

SAFETY

Fewer faults during connection because of the simple application, which generates no high temperatures or sparks and therefore eliminates the risk of fire.

NO PREPARATIONS REQUIRED

Requires no welding, machining or surface treatment.

RELIABILITY

Constant connection with long life span, which ensures good electrical conductivity.

TRACEABILITY

Every Railbond is marked with a batch number.

EXPERIENCE

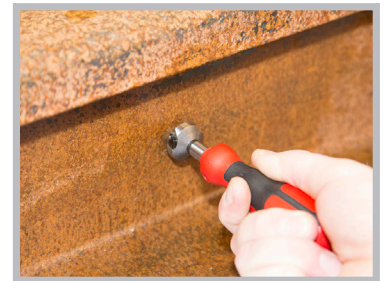
Many years of international experience using Railbond. E.g. SNCF (France), London Underground, and the Swedish Transport Administration.

Elpress System Railbond is designed to connect to a rail. The connection provides a secure and reliable link for the contact between the cable clip and rail following a signal or earthing connection. The tested programme, with references from several European countries and documented tests according to applicable standards, consists of cable clips, crimping tool, drill and deburring tool in addition to Railbond.

Simple and quick approach



Drill the hole. Apply the cutting oil.



Clean inside the hole after drilling
Remove burrs from the hole using a deburring tool. A good contact surface has been created.



Screw Railbond on to the front of the assembly tool and insert it into the freshly drilled hole.



Turn the assembly tool onto its front section. Squeeze the handle until you hear a "click". Railbond will be firmly attached once you have tightened the joint with the torque wrench.



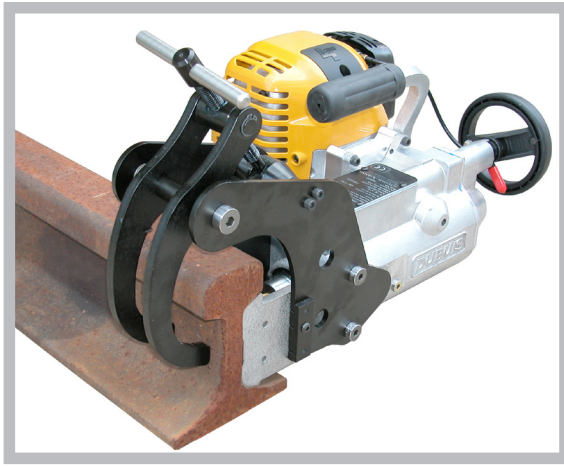
Crimp the Elpress cable clip using the appropriate tool.



Place the cable clip on the bolt. Always use the supplied washer and nut and also the torque wrench according to recommendations.



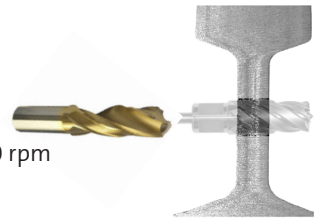
ELPRESS®



Driller, VBP13.5

– fitted with four-stroke motor and designed to drill holes in railway rails

- weight 19 kg
- dimension 560x290x240
- 4-stroke motor
- maximum power output of 1.47 kW, 6,000 rpm
- rotation of spindle 370 rpm
- drills up to 13.5 mm with 2-step drill
- tank capacity 1.1 litres
- has a fixture as shown in the image that fixes the drill to the rail
- Case of wood for the machine and accessories



Name	Description
VBP13.5-KIT	Driller, 2 x drills, oil, deburring tool, gauge, rail clip (U50, UIC60, SJ43). Packaged in wooden box.
Accessories	
VBB13.5	Drill 2-step drill and reamer, diameter 13.5 mm 1625065
VBG25	Deburring tool up to 25 mm diameter
VBK400	Cooling oil in can, 400 ml, enough for about 30 holes
VBTOLK-13.5	Drill gauge for Ø13.5
VBR-U50	Rail clip for rail profile U50
VBR-UIC60	Rail clip for rail profile UIC60
VBR-SJ43	Rail clip for rail profile SJ43



Assembly tool VB310

VB310 is a hydraulic assembly tool that applies a tensile force to the Railbond so that it expands inside the rail structure. VB310 is a user friendly tool and can also be used in confined spaces by removing the lower handle from the tool. The tool consists of two sections; the hydraulic tool and a separate mounting sleeve that facilitates work on the rails.

NOTE: The pressure must be released in the tool before use.

Name	Description
VB310-KIT	M10 assembly tool including torque wrench and nut socket



Railbond-KIT

The new RAILBONDM10-FR75-KIT contains everything you need to connect a 75 mm² aluminium cable to the rails.

- 10 x Railbond M10
- 10 x cable clip FR75-10LB
- 10 x stainless steel nut and washer M10
- 10 x insulation
- Instructions for Railbond & FR75-10LB



Name	Description
RAILBONDM10-FR75-KIT	Kit with component parts as above

Railbond

Railbond comes in two sections; a conical stainless steel bolt and a tin-plated copper bushing. When the tensile force is applied, the conical bolt is pulled through the bushing which then expands inside the rail to create a good and secure contact.

Name	Description
RAILBONDM10-17.5*	Railbond, diameter 13.5 mm, length 17.5 mm, M10, assembly on 1 page

* Included in Railbond-KIT





Terminals and tools

Connection of aluminium cable for earthing (75 mm²)

Elpress battery-powered crimping tool PVX1300 with a 13-tonne crimping force is used for crimping FR75-XXLB with associated B18 crimp dies and associated die holders V1316 and V1318 (or crimp die 13B18 which is an integrated die with die holder).

Area	Name	Description	Die	Tool
75 mm ²	FR75-8LB-KIT2	Steel terminal M8 incl. insulation	B18, 13B18	PVX1300
75 mm ²	FR75-10LB-KIT2*	Steel terminal M10 incl. insulation	B18, 13B18	PVX1300
75 mm ²	FR75-12LB-KIT2	Steel terminal M12 incl. insulation	B18, 13B18	PVX1300

* Included in Railbond-KIT

Connection of copper cable 50 and 70 mm² to the rail

Area	Name	Description	Die	Tool
50 mm ²	CHCU50-300-10	Extended connection 50 mm ² , 300 mm, flexible Cu, tin-plated 0.30 mm wire including terminal and joint sleeve	B14.5	PVX1300
			13B14.5 TB11-14.5	PVX611
70 mm ²	CHCU70-300-10	Extended connection 70 mm ² , 300 mm, flexible Cu, tin-plated 0.30 mm wire incl. terminal and jointing sleeve	B17	PVX1300
			13B17 TB8-17	PVX611



SYSTEM ELPRESS SERVICE

– ensures the quality of your connection

Our service department maintains, repairs, checks, calibrates and certifies Elpress tools and power sources. Following a review of the equipment by the service department, certificates are issued that verify the performance of the tools.

Contact Service: Tel +46 612 71 71 81, e-mail: service@elpress.se



SYSTEM ELPRESS ACADEMY

– Qualified quality assurance

The training consists of a theoretical and a practical element and is concluded with a written test. Following a successful result, the course participant will receive a course certificate indicating the level of privileges.

- Operating the tool
- Working procedure
- ELPRESS DUAL technology
- Quality control
- Safety in use
- Preventive maintenance

Contact Academy: Tel +46 612 71 71 99, e-mail: academy@elpress.se



SYSTEM ELPRESS CONSULTING

– Helps you ensure the highest quality in your production

We have been developing, manufacturing and marketing turnkey crimping systems for electrical connections for more than 50 years.

We have the expertise, experience and equipment to satisfy your needs.

Contact Consulting: Tel +46 612 71 71 99, e-mail: consulting@elpress.se



ELPRESS®